

# BATTERY CHARGER

Part No. #020-0085-00



## BATTERY CHARGER, NEMA 4, 1.5kW-240V/1PH-60Hz, 74V/21A

### APPLICATION

This high performance battery charger is an ideal unit to be used onboard locomotives.

It is a rugged, watertight electronic device that assures top quality and long-time reliability.

### PERFORMANCE

- ✓ Input power factor better than 0.98
- ✓ Supplies 21-Amp charging current at 74Vdc
- ✓ Operating temperatures range from -22°F to 149°F (-30°C to 65°C)
- ✓ Natural convection

### FEATURES

- ✓ 3 LED (low-emitting diode) status indicators
- ✓ Withstands short-circuit conditions
- ✓ NEMA 4 watertight enclosure
- ✓ Bayonet-type connector for easy installation
- ✓ Circuit breaker for reverse output polarity protection
- ✓ Thermal shutdown with automatic restart
- ✓ Provides input to output isolation
- ✓ Other nominal input voltage ranges 120Vac, 480Vac

### SIMILAR PRODUCTS

- ✓ Version 3kW input 480V/1PH-60Hz and output 74V/42A (Order No. 020-0100-00).
- ✓ Version 3kW input 120V/1PH-60Hz and output 74V/42A (Order No. 020-0184-00).



## BUILT TO SUSTAIN HARSH RAILWAY ENVIRONNEMENT

### SPECIFICATIONS

<b>INPUT:</b>	240Vac $\pm$ 30Vac at 7.5A max
<b>OUTPUT:</b>	74Vdc $\pm$ 0.5Vdc Current limitation 21A $\pm$ 2.5A
<b>HUMIDITY:</b>	0 to 100%, non-condensing
<b>MTBF:</b>	180,000hrs
<b>DIMENSIONS:</b>	14"H x 18"W x 6 1/2"D (356mm x 457mm x 165mm)
<b>WEIGHT :</b>	less than 35lbs (16 kg)

542 LEPINE AVE, MONTREAL (DORVAL), QUEBEC, H9P 2V6, CANADA

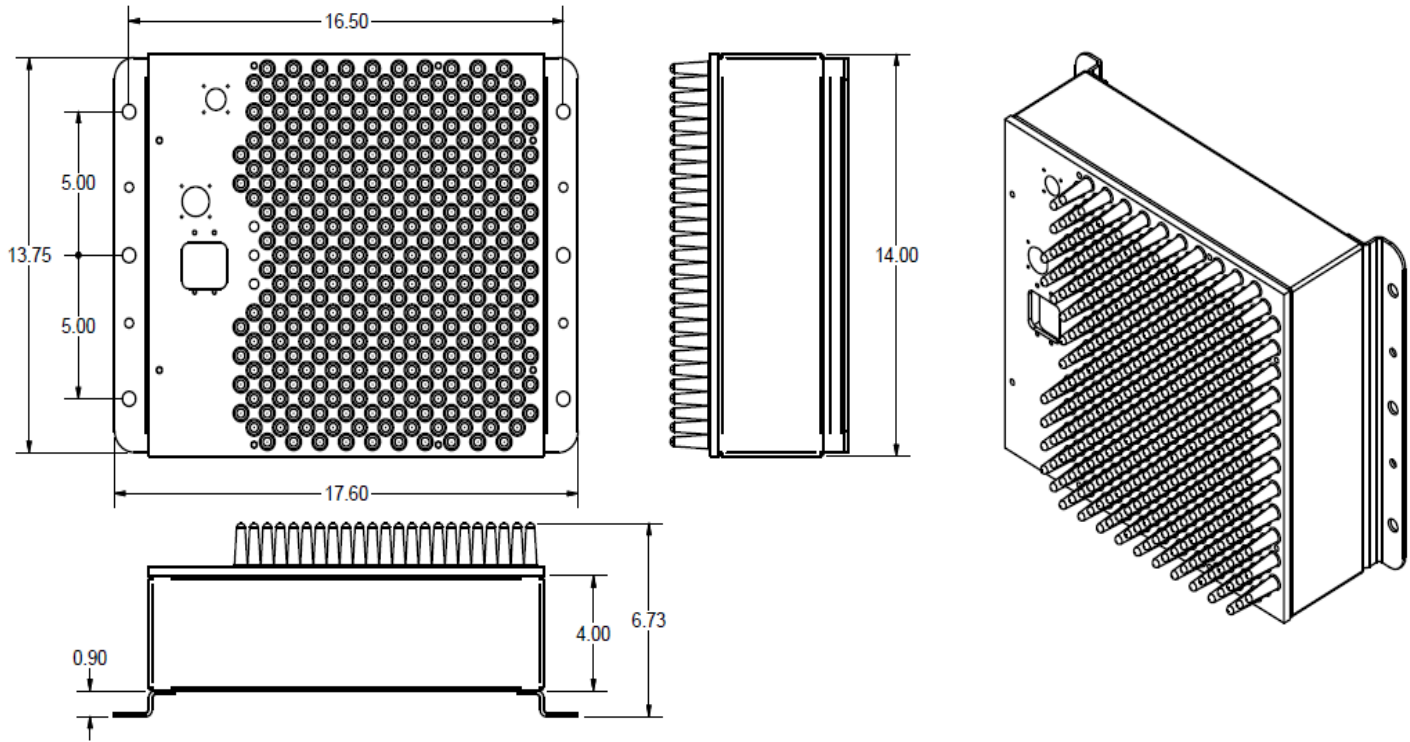
TEL.: 514-633-6452

TOLL FREE: 1-800-380-9424

FAX: 514-633-6453

E-MAIL: MAIL@TRANSTRONIC.QC.CA

# BATTERY CHARGER, NEMA 4, 1.5kW-240V/1PH-60Hz, 74V/21A



## DIMENSIONS

HEIGHT	18" (45.7mm)	Allow 4" (10.2cm) clearance around the heat sink
WIDTH	14" (42mm)	
DEPTH	8" (20.4mm)	

## WEIGHT

TOTAL WEIGHT	Less than 35lbs (16 kg)
--------------	-------------------------

## INPUT

VOLTAGE	Single phase 240Vac $\pm$ 30Vac / 60Hz $\pm$ 5Hz
CURRENT	7.5A max (Power factor greater than 0.98)

## OUTPUT

VOLTAGE	74Vdc $\pm$ 0.5Vdc
CURRENT LIMIT	21A $\pm$ 2.5A

## EFFICIENCY

85% minimum at nominal rating

## CONNECTIONS

INPUT	CA-Bayonet 3 pins
OUTPUT	CA-Bayonet 2 pins

## STATUS INDICATORS

SYSTEM OK	ON - Green	normal operation
BREAKER OPEN	ON - Yellow	output voltage is available

## PROTECTIONS

INPUT	Internal fuse
OUTPUT	Circuit breaker or reversed polarity protection Current limited without breaker tripping
OVER TEMPERATURE	Thermal shutdown with automatic restart
INPUT-OUTPUT ISOLATION	floating input with transformer

## ENVIRONNEMENT

STORAGE TEMPERATURE	-40°F to 179°F (-40°C to 85°C)
OPERATING TEMPERATURE	-8°F to 158°F (-22°C to 70°C)
HUMIDITY	0 to 100%, non-condensing
ALTITUDE	0 to 10,000ft (3048m)
COOLING	Natural convection

SHOCK + VIBRATIONS	IEC 571-1
EMI	IEC 801
ENCLOSURE TYPE	NEMA 4 ENCLOSURE

## VARIANT MODEL NUMBER

ORDER No.	SPECIFICATIONS
020-0093-00	w/ 2 Pins CA-bayonet output connector
020-0109-00	120V/1PH-60Hz square wave input
020-0128-00	480V/1PH-60Hz
020-0138-00	120V/1PH-60Hz
020-0144-00	w/ output 72Vdc / 21A

Part No.  
**020-0085-00**

© TRANSTRONIC INC. 2017  
Specifications are subject to change without notice.  
Printed in Canada

DOC 007-0029-32(v1) REV(-)